

**Southeastern Ohio Oil and Gas Association  
Gas Committee Report  
January, 2023**

**Prices January,2023**

<b>NYMEX Settle –January – 2023</b>	<b>\$4.71</b>
<b>One Year NYMEX strip (Feb. 2023 Jan. 2023)</b>	<b>\$3.51</b>
<b>Summer NYMEX strip for 2022 (Apr., 2023 - Oct., 2023)</b>	<b>\$3.53</b>
<b>Winter NYMEX strip – 2022 (Feb., 2023 – Mar. 2023)</b>	<b>\$3.74</b>
<b>TCO Index Posting –January, 2023</b>	<b>\$3.96</b>
<b>DTI Index Posting – January, 2023</b>	<b>\$3.60</b>

**January 5, 2023 Storage Report:**

Working gas in underground storage, Lower 48 states [Summary text](#) [CSV](#) [JSN](#)

Region	Historical Comparisons							
	Stocks billion cubic feet (Bcf)				Year ago 12/30/21)		5-year average (2017-21)	
	12/30/22	12/23/22	net change	implied flow	Bcf	% change	Bcf	% change
East	691	747	-56	-56	768	-10.0	740	-6.6
Midwest	839	899	-60	-60	807	-6.5	876	-4.2
Mountain	157	166	-9	-9	173	-9.2	173	-9.2
Pacific	165	165	0	0	221	-25.3	247	-33.2
South Central	1,040	1,136	-96	-96	1,139	-8.7	1,063	-2.2
Salt	270	323	-53	-53	344	-21.5	317	-14.8
Nonsalt	770	813	-43	-43	795	-3.1	747	3.1
<b>Total</b>	<b>2,891</b>	<b>3,112</b>	<b>-221</b>	<b>-221</b>	<b>3,199</b>	<b>-9.6</b>	<b>3,099</b>	<b>-6.7</b>

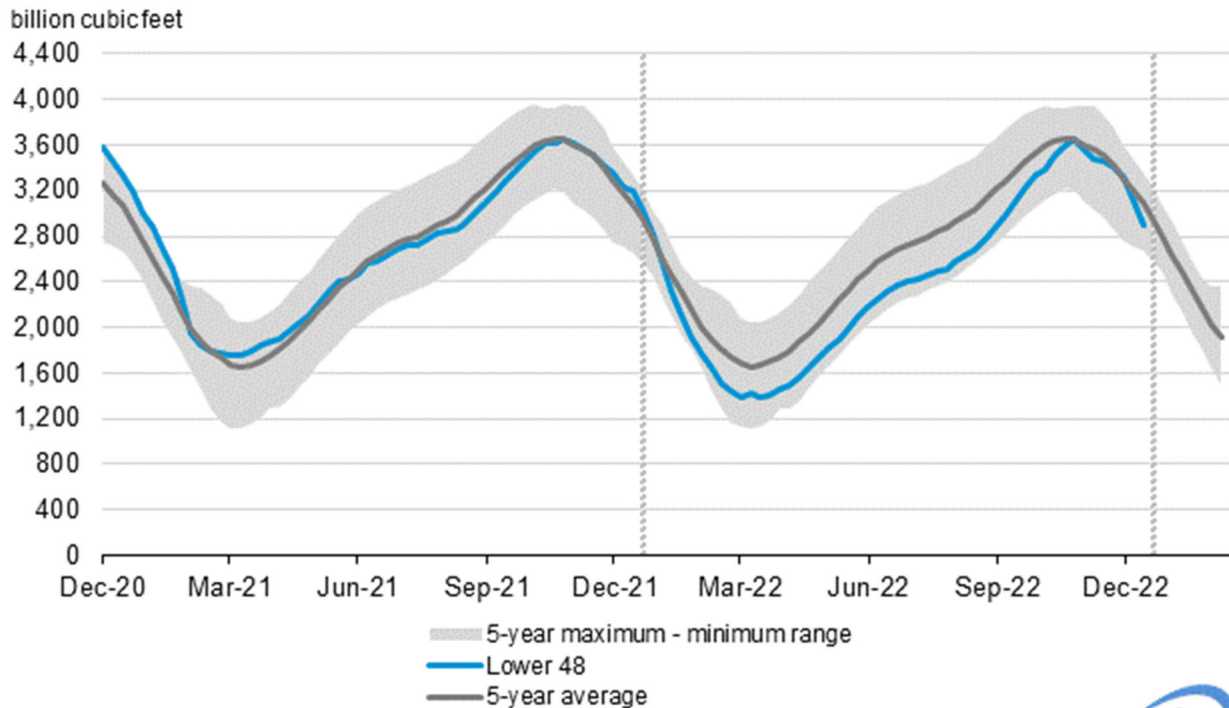
Totals may not equal sum of components because of independent rounding.

## Summary

Working gas in storage was 2,891 Bcf as of Friday, December 30, 2022, according to EIA estimates. This represents a net decrease of 221 Bcf from the previous week. Stocks were 308 Bcf less than last year at this time and 208 Bcf below the five-year average of 3,099 Bcf. At 2,891 Bcf, total working gas is within the five-year historical range.

[htt](#)

## Working gas in underground storage compared with the 5-year maximum and minimum



Data source: U.S. Energy Information Administration



### Prices/Supply/Demand

- **Supply:** According to data from PointLogic, the average total supply of natural gas rose by 0.2% (0.2 Bcf/d) compared with the previous report week. Dry natural gas production decreased by 0.9% (0.9 Bcf/d) to average 99.4 Bcf/d, and average net imports from Canada increased by 20.1% (1.1 Bcf/d).
- **Demand:** Total U.S. consumption of natural gas rose by 15.5% (14.5 Bcf/d) compared with the previous report week, according to data from PointLogic. Natural gas consumed for power generation increased by 8.2% (2.6 Bcf/d) week over week. Natural gas consumption in the industrial sector increased by 4.9% (1.2 Bcf/d), and in the residential and commercial sectors, natural gas consumption increased by 28.6% (10.7 Bcf/d). [Below-normal temperatures](#) throughout much of the United States this report week led to increased heating demand. Natural gas exports to Mexico increased 4.4% (0.2 Bcf/d), and natural gas deliveries to U.S. LNG export facilities (LNG pipeline receipts) averaged 12.7 Bcf/d, which was 0.4 Bcf/d higher than last week.

## North East Prices:

- In the Northeast at the Algonquin Citygate, which serves [Boston-area consumers](#), the price went down \$3.66 from \$10.17/MMBtu last Wednesday to \$6.51/MMBtu yesterday. At the Transcontinental Pipeline Zone 6 trading point for New York City, the price decreased \$1.99 from \$8.28/MMBtu last Wednesday to \$6.29/MMBtu yesterday. The Tennessee Zone 4 Marcellus spot price decreased 97 cents from \$5.53/MMBtu last Wednesday to \$4.56/MMBtu yesterday. The price at Eastern Gas South in southwest Pennsylvania fell 63 cents from \$5.35/MMBtu last Wednesday to \$4.72/MMBtu yesterday. Above-average temperatures in the [Boston Area](#) this week resulted in 18 fewer HDDs than normal.

## LNG

- **Pipeline receipts:** Overall natural gas deliveries to U.S. LNG export terminals increased by 0.4 Bcf/d week over week to average 12.7 Bcf/d this report week, according to data from PointLogic. Natural gas deliveries to LNG export terminals in South Louisiana increased by 0.4 Bcf/d week over week to 9.3 Bcf/d, and natural gas deliveries to all other terminals were essentially unchanged averaging close to 3.5 Bcf/d. According to [Gulf South Pipeline](#), natural gas deliveries to Freeport LNG have averaged about 20 million cubic feet per day since December 20.
- **Vessels departing U.S. ports:** Twenty-six LNG vessels (ten from Sabine Pass, five each from Cameron and Corpus Christi, three from Calcasieu Pass, two from Cove Point, and one from Elba Island) with a combined LNG-carrying capacity of 98 Bcf departed the United States between December 15 and December 21, according to shipping data provided by Bloomberg Finance, L.P.