

**Southeastern Ohio Oil and Gas Association  
Gas Committee Report  
November, 2022**

**Prices November 8, 2022**

<b>NYMEX Settle –November, – 2022</b>	<b>\$5.19</b>
<b>One Year NYMEX strip (Nov. 2022 – Oct. 2023)</b>	<b>\$5.51</b>
<b>Summer NYMEX strip for 2022 (Apr., 2023 - Oct., 2023)</b>	<b>\$4.99</b>
<b>Winter NYMEX strip – 2022 (Dec., 2022 – Mar. 2023)</b>	<b>\$6.21</b>
<b>TCO Index Posting – November, 2022</b>	<b>\$4.02</b>
<b>DTI Index Posting – November, 2022</b>	<b>\$3.80</b>

**November 3, 2022 Storage Report:**

Working gas in underground storage, Lower 48 states [Summary text CSV ISN](#)

Region	Historical Comparisons							
	Stocks billion cubic feet (Bcf)				Year ago 10/28/21)		5-year average (2017-21)	
	10/28/22	10/21/22	net change	implied flow	Bcf	% change	Bcf	% change
East	848	825	23	23	897	-5.5	903	-6.1
Midwest	1,042	1,007	35	35	1,068	-2.4	1,072	-2.8
Mountain	204	199	5	5	213	-4.2	214	-4.7
Pacific	247	248	-1	*1	24756	-3.5	290	-14.8
South Central	1,160	1,116	44	44	1,168	-0.7	1,156	0.3
Salt	299	277	22	22	318	-6.0	306	-2.3
Nonsalt	861	839	22	22	850	1.3	850	1.3
<b>Total</b>	<b>3,501</b>	<b>2,394</b>	<b>107</b>	<b>107</b>	<b>3,602</b>	<b>-2.8</b>	<b>3,636</b>	<b>-3.7</b>

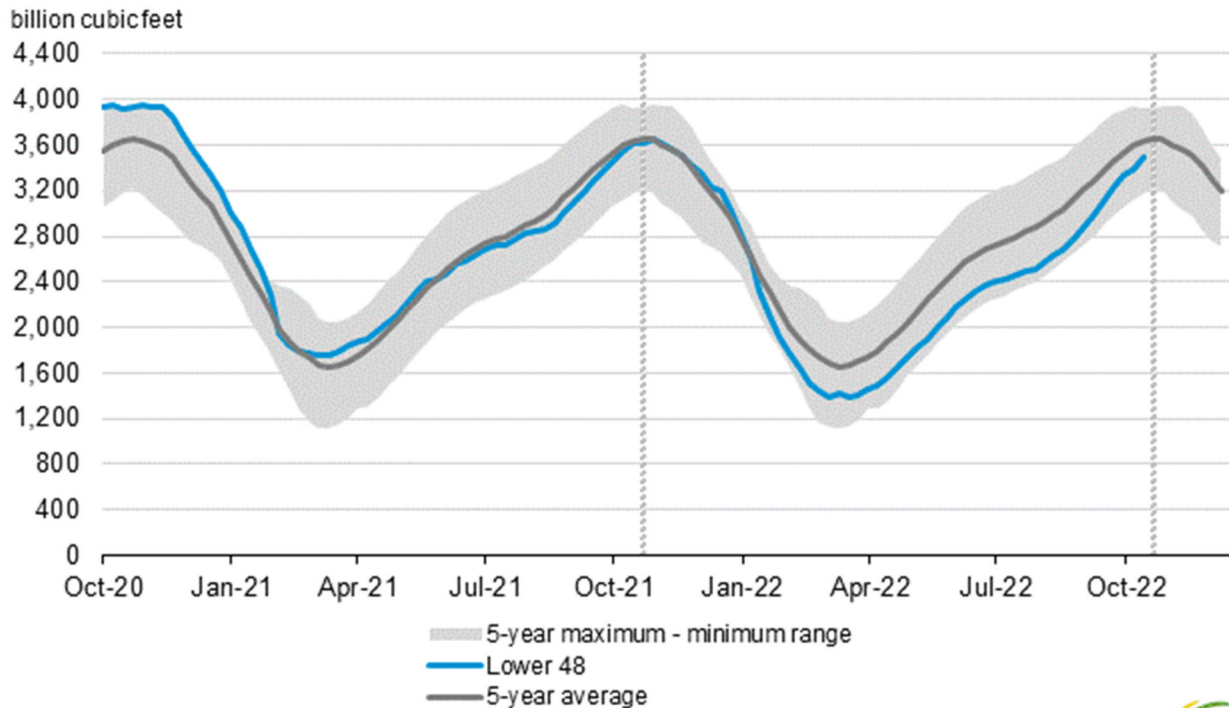
Totals may not equal sum of components because of independent rounding.

## Summary

Working gas in storage was 3,501 Bcf as of Friday, October 28, 2022, according to EIA estimates. This represents a net increase of 107 Bcf from the previous week. Stocks were 101 Bcf less than last year at this time and 135 Bcf below the five-year average of 3,636 Bcf. At 3,501 Bcf, total working gas is within the five-year historical range.

[htt](#)

Working gas in underground storage compared with the 5-year maximum and minimum



Source: U.S. Energy Information Administration



### Prices/Supply/Demand

- **Supply:** According to data from PointLogic, the average total supply of natural gas rose by 0.3% (0.3 Bcf/d) compared with the previous report week. Dry natural gas production grew by 0.5% (0.5 Bcf/d), and average net imports from Canada decreased by 4.6% (0.2 Bcf/d) from last week.
- **Demand:** Total U.S. consumption of natural gas rose by 2.7% (1.8 Bcf/d) compared with the previous report week, according to data from PointLogic. Natural gas consumed for power generation declined by 3.1% (0.9 Bcf/d) week over week. In the residential and commercial sectors, consumption increased by 15.4% (2.5 Bcf/d), and industrial sector consumption increased by 1.0% (0.2 Bcf/d). Natural gas exports to Mexico decreased 1.6% (0.1 Bcf/d). Natural gas deliveries to U.S. LNG export facilities (LNG pipeline receipts) averaged 11.9 Bcf/d, or 0.4 Bcf/d higher than last week.

## North East Prices:

- Prices in the Northeast fell this week, in line with the Henry Hub. At the Algonquin Citygate, which serves [Boston-area consumers](#), the price fell 93 cents from \$4.59/MMBtu last Wednesday to \$3.66/MMBtu yesterday, and at the Transcontinental Pipeline Zone 6 trading point for New York City, the price decreased \$1.25 from \$4.44/MMBtu last Wednesday to \$3.19/MMBtu yesterday. Temperatures in the [Boston Area](#) averaged 54°F this report week, 4°F above normal, leading to 30 fewer heating [degree days](#) (HDD) than is normal for this time of year. In the [New York-Central Park Area](#) temperatures averaged 57°F, 3°F above normal, leading to 26 fewer HDDs than normal.

## LNG

- **Pipeline receipts:** Overall natural gas deliveries to U.S. LNG export terminals increased by 0.4 Bcf/d week over week to average 11.9 Bcf/d this report week. Natural gas deliveries to Cove Point drove this increase, averaging 0.7 Bcf/d this week as the terminal resumed operations on October 28 following the completion of its annual planned maintenance. Natural gas deliveries to LNG export terminals in South Louisiana decreased by 0.2 Bcf/d to 8.5 Bcf/d, while deliveries to other terminals in the Southeast and South Texas were relatively flat at a combined 2.7 Bcf/d, according to data from PointLogic.
- 
- **Vessels departing U.S. ports:** Twenty-one LNG vessels (nine from Sabine Pass, four each from Cameron and Corpus Christi, three from Calcasieu Pass, and one from Cove Point) with a combined LNG-carrying capacity of 78 Bcf departed the United States between October 27 and November 2, according to shipping data provided by Bloomberg Finance, L.P.